

# THE ROOFING REPORT

A Biannual Newsletter for and about Single-Ply Systems Employees, Clients, Partners & Friends.

**SINGLE-PLY  
SYSTEMS, INC.**

**Q1/2021**

**State of the Company**

Welcome to the first edition of the *The Roofing Report* a biannual newsletter for and about Single-Ply Systems employees, clients, partners and friends.

I stepped down as president of Single-Ply Systems in January of this year, a role that I have held since 1983, and have now become chairman.

This is not a big change, as over the last several years I have become less involved in the day to day operations. As chairman I will advise on management decisions, annual goals, and most importantly continuing to meet or exceed our customers' expectations.

Nate Cline and Casey Elder have taken over leadership of the company, Nate as president and Casey as vice president. Nate started at Single-Ply in 2003, shortly after graduating from Winona State University with a degree in psychology and has been a partner since 2012. Casey graduated from St. Mary's University with a degree in communications, and worked at IGA and Elder-Jones prior to coming to Single-Ply in 2010. I have no doubts about their ability to work with, and lead, this company's outstanding staff.

Nate and Casey will be assisted, as I was by partners Dave Zurn, Jeff Anderson, James Russell, LeRoy Swanson and Andy Barna. They have been responsible for the day to day operations of Single-Ply Systems since 2010, and I know that Nate and Casey will be as honored, and successful, in working with them as I have been.

It has been an exciting and rewarding 38 year journey for me with the "The Ply". In 1983 I acquired Tommy Tone's inter-

est and became partners with Bud Vober until acquiring Bud's interest in 2000. Starting out, we were a small regional roofing contractor. We quickly expanded and found our niche as a national commercial roofing contractor specializing in installing thermoplastic roofing systems nationwide. We have completed projects in most of the 50 states including projects in Puerto Rico and Alaska.



**Joe Elder**  
Chairman

Though the company has grown and evolved into what it is today, our simple philosophy of "do what you say - say what you do" remains the same. Our dedicated team of employees have been consistently committed to providing the best possible roofing projects for our clients. That was true in the 1980's and it is true today. And that one fact makes all the difference between mediocrity and excellence, and between success and failure.

Nate and Casey recognize the importance and value that each employee makes to this company. I am excited to see the new ideas, new clients, and new markets they will explore. And I am confident that the journey will be as exciting and rewarding for them, and those they work with, as it has been for me.

**National Excellence in Single-Ply Roof Installation Since 1983**

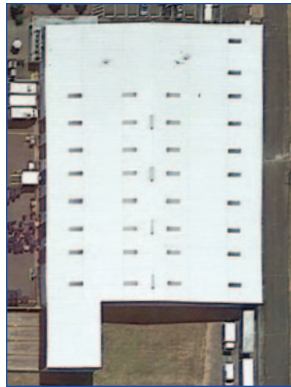
## NOTABLE PROJECTS



<b>Location</b>	Poplar Bluff, MO
<b>Sq Ft</b>	214,000
<b>PM</b>	James Russell
<b>Foreman</b>	David Amaya



<b>Location</b>	Bloomington, MN
<b>Sq Ft</b>	110,800
<b>PM</b>	Andy Barna
<b>Foreman</b>	Carlos Leberon



<b>Location</b>	Corvallis, OR
<b>Sq Ft</b>	43,400
<b>PM</b>	LeRoy Swanson
<b>Foreman</b>	Ronald Garcia



<b>Location</b>	Hanover, MD
<b>Sq Ft</b>	168,200
<b>PM</b>	LeRoy Swanson
<b>Foreman</b>	German Sanchez

## MEET THE TEAM



**James Russell**  
Project Manager

- Grew up in MN and WI
- University Northern Iowa
- Married with 2 kids
- Enjoys playing hockey and working on his 70 acre farm with his wife in Sparta WI.



**Cortney Bauer**  
Admin. Assistant

- Inver Grove Heights MN native
- Attended Dakota County Tech
- Has 10 year old daughter, Willa
- Enjoys antiquing, crafting, watching MN sports and playing in a summer bocce ball league.



**Joey Olson**  
Sr. Service Tech

- Mountain Iron MN native
- Started at Single-Ply in 1984
- Currently lives in Ham Lake MN
- Enjoys hunting, fishing, camping, snowmobiling and working on projects at his house and cabin.